

CORRIDOR AESTHETICS

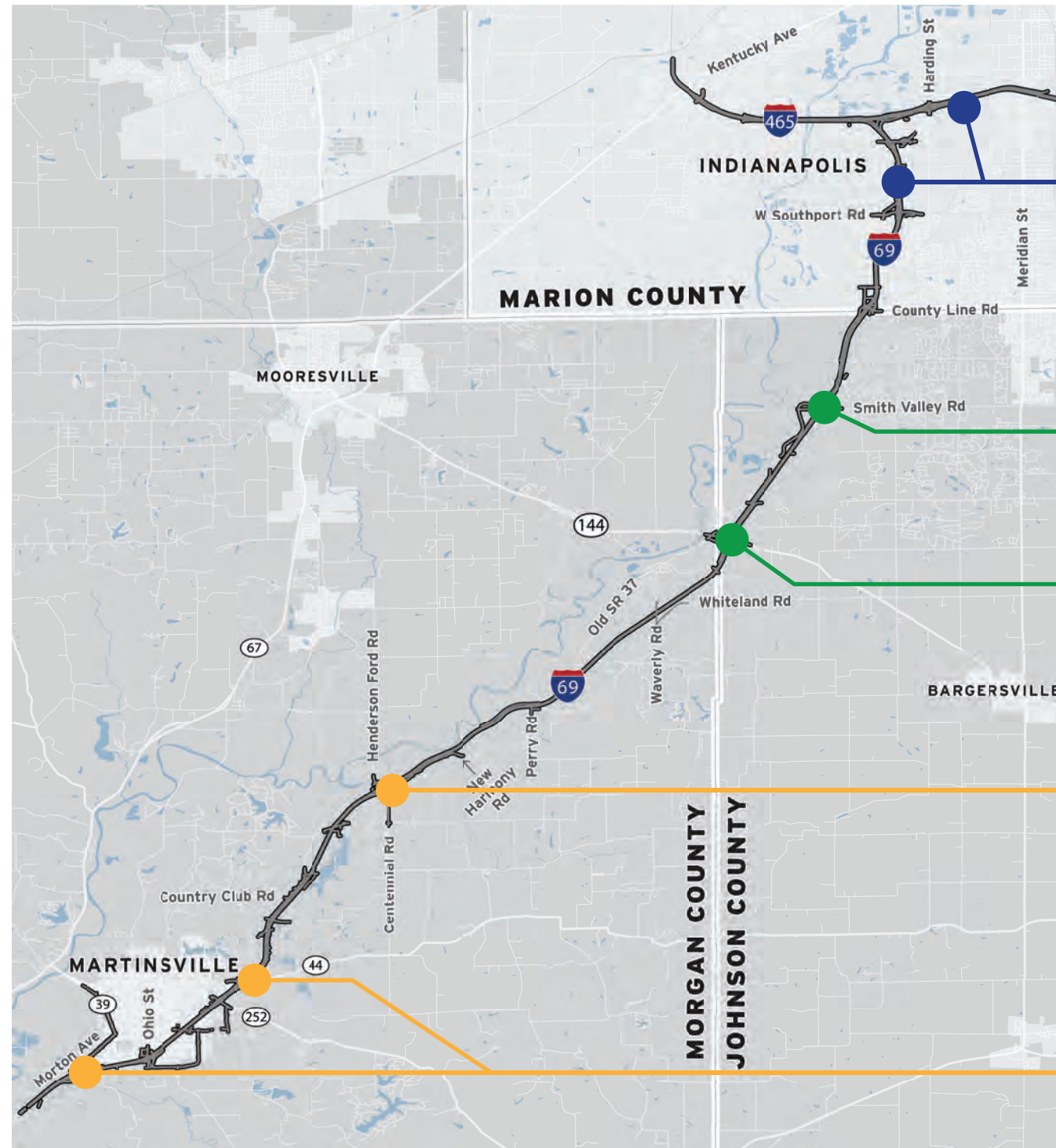
Morgan County | Johnson County | Marion County



The following pages highlight the aesthetic treatments and conceptual landscaping plans for the I-69 Finish Line Project.

CORRIDOR AESTHETICS

Morgan County | Johnson County | Marion County



I-465 & I-69 Corridor Landscape Treatments
(Pages 6 - 12)

Smith Valley Road, Overpass Aesthetic Treatments
(Page 5)

State Road 144, Overpass Aesthetic Treatments
(Page 4)

Henderson Ford Road, Morgan County Monument
(Page 3)

State Road 44, Martinsville Gateway Monument
(Page 2)

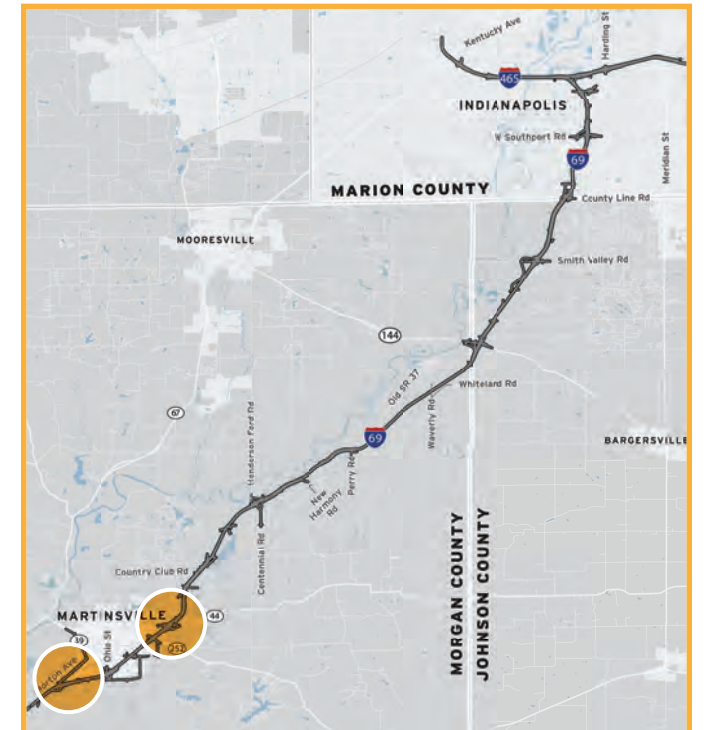
MORGAN COUNTY

Corridor Aesthetics



SR 44 Interchange & SR 39 Interchange | Monument

LOCATION PLAN



Tower Concept



Front Elevation

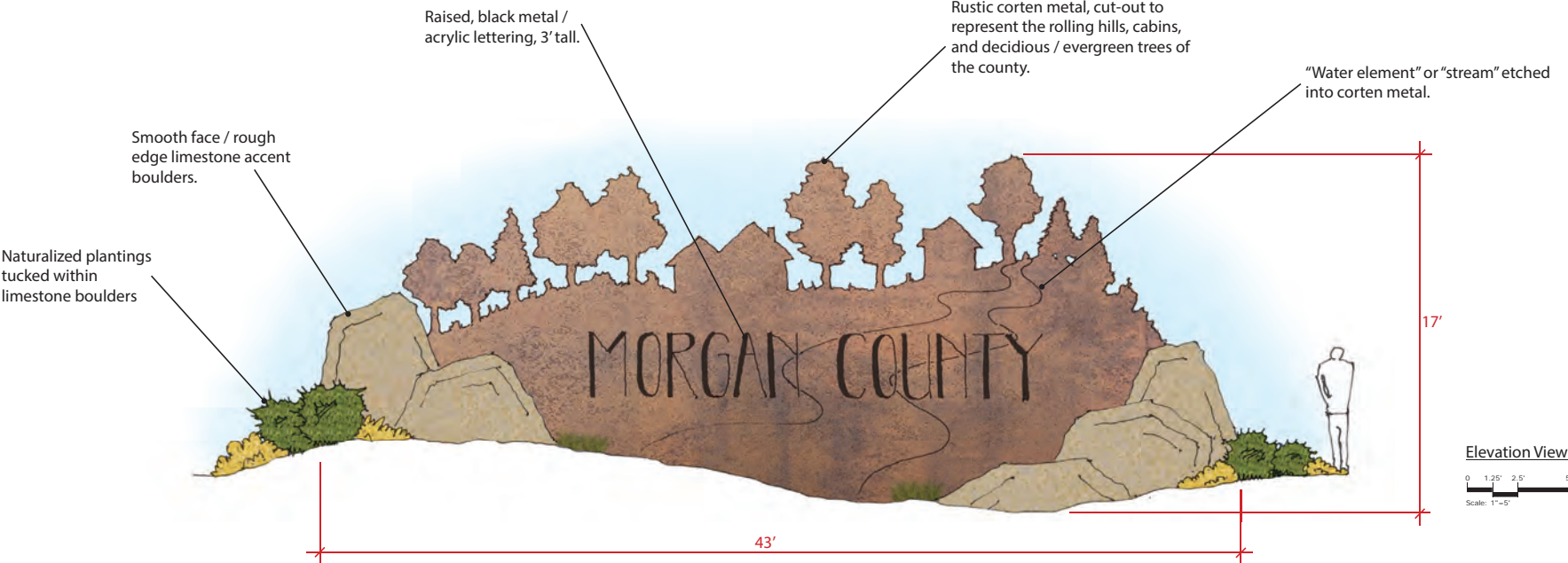
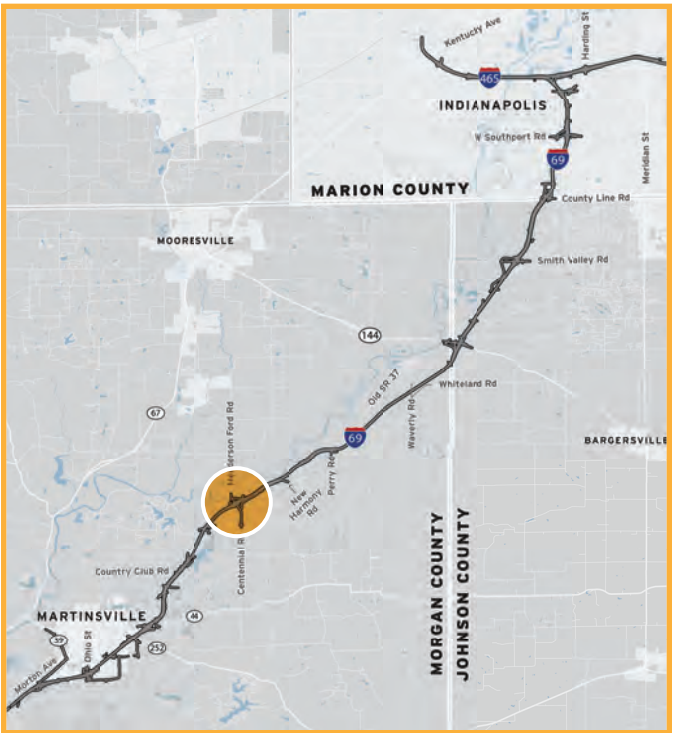
MORGAN COUNTY

Corridor Aesthetics



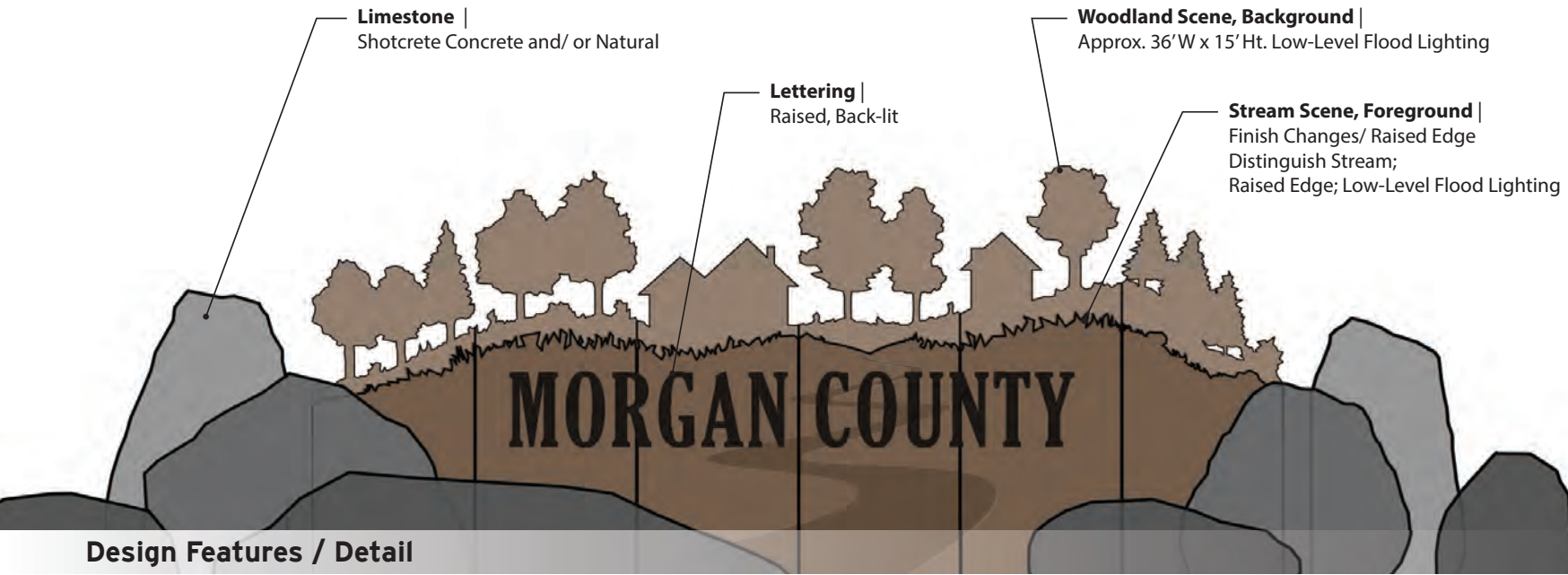
Henderson Ford Road Interchange | Monument

LOCATION PLAN



Precedent Imagery

Preferred Concept



Lighting Detail - Night View

Design Features / Detail

JOHNSON COUNTY

Corridor Aesthetics

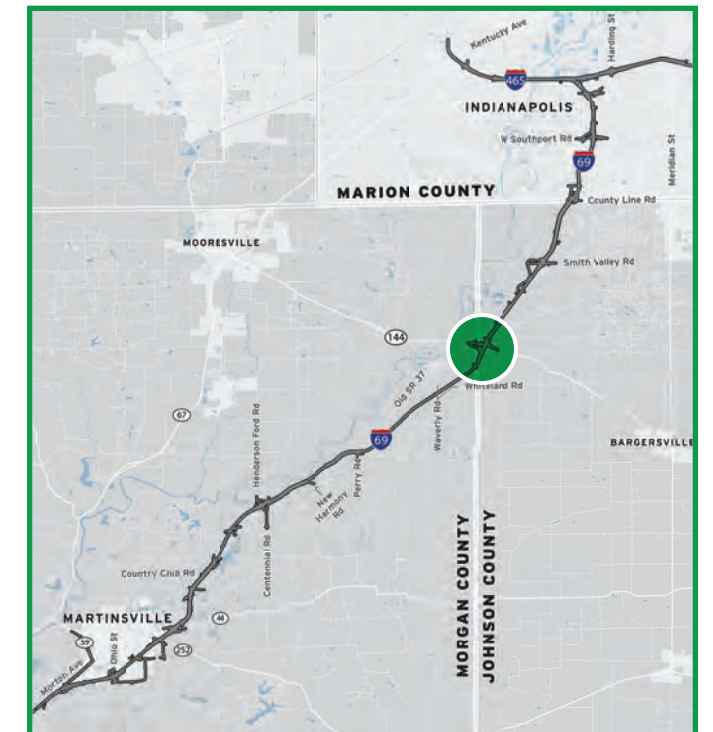


State Road 144 | Overpass Aesthetics



Bird's-Eye View

LOCATION PLAN



Driver's View



Wall Detail View

JOHNSON COUNTY

Corridor Aesthetics

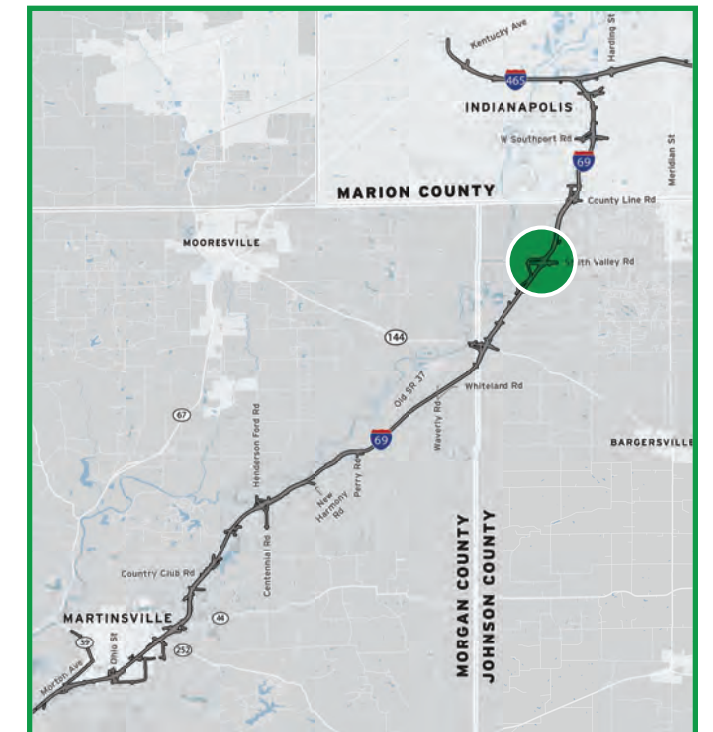


Smith Valley Road | Overpass Aesthetics



Bird's-eye View

LOCATION PLAN



Driver's View

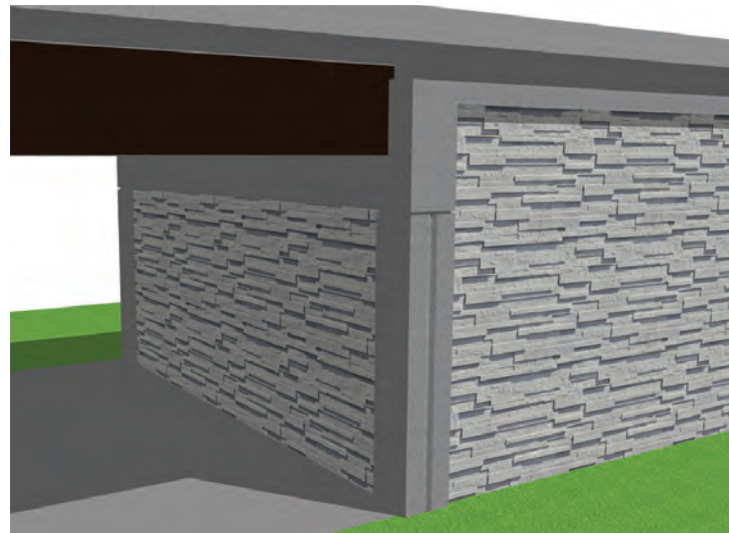


Trail User's View

Bridge/Interchange Aesthetic Treatments



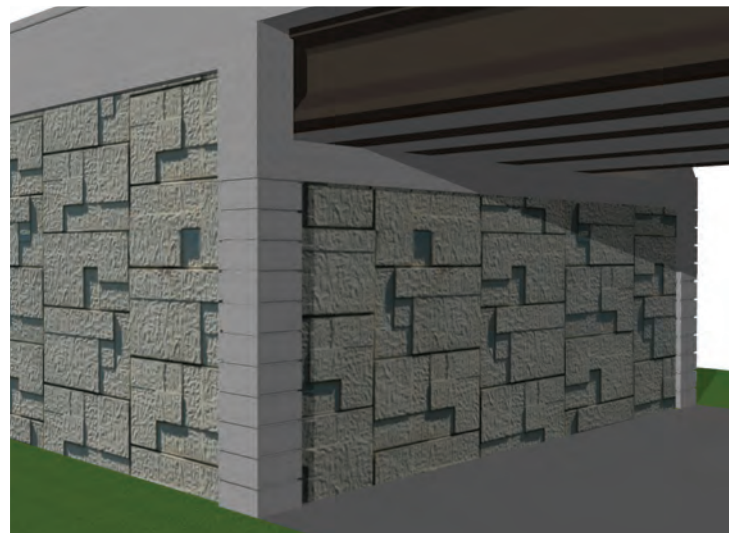
I-69 Concise Hex Pier



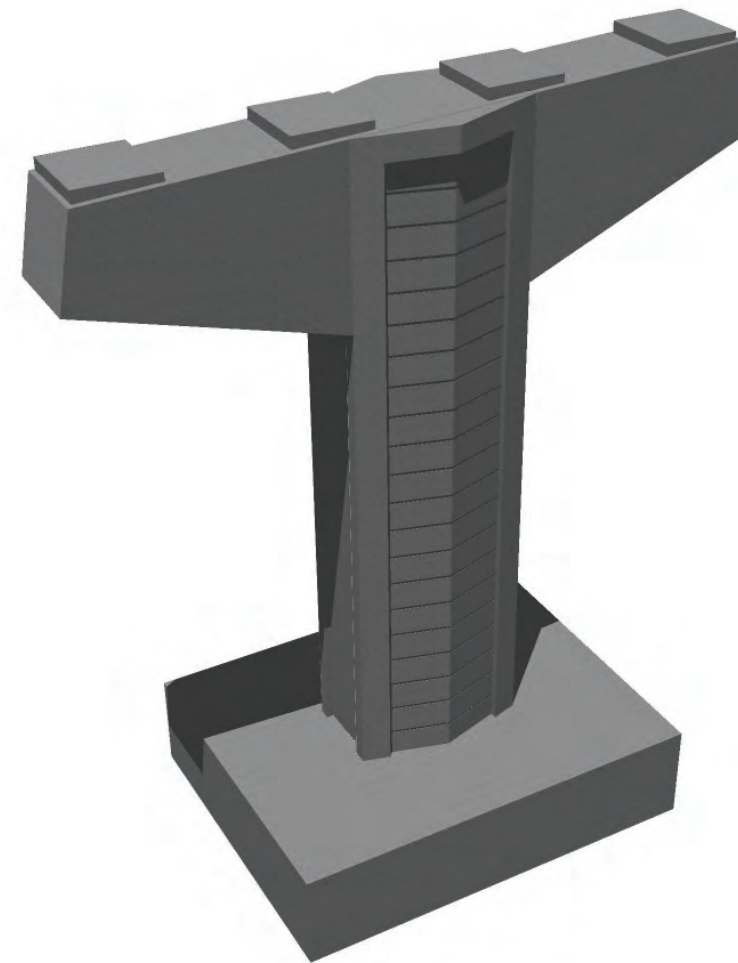
I-69 Bridge Abutment Treatment



I-465 Pier

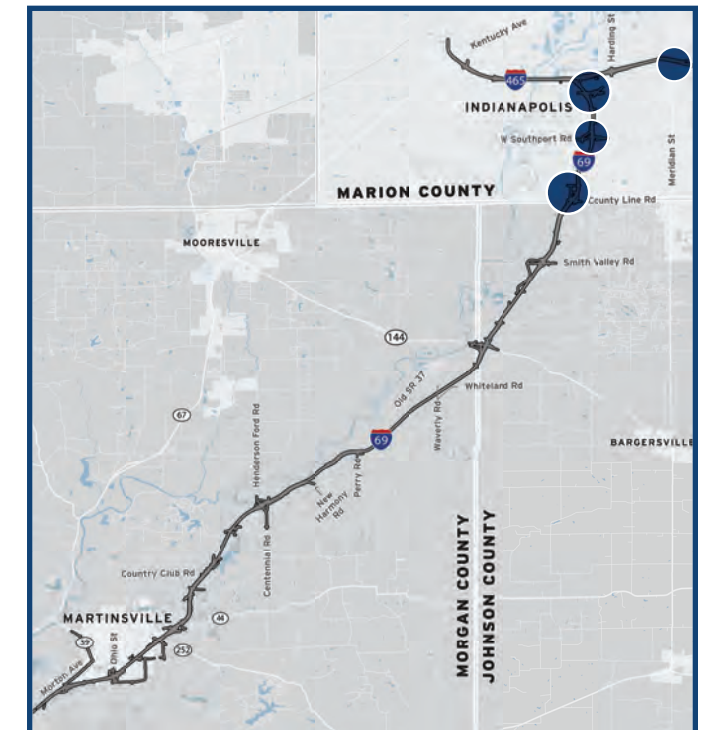


I-465 Bridge Abutment Treatment



I-69/I-465 Interchange Pier

LOCATION PLAN



MARION COUNTY

Corridor Aesthetics



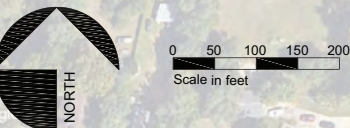
Conceptual Corridor Landscaping

LOCATION PLAN



I-465 - I-69 INTERCHANGE

- Key
- Deciduous Tree (shown @ 30' dia.)
 - Evergreen Tree (shown @ 20' dia.)
 - Ornamental Tree (shown @ 20' dia.)



KEY		TOTAL (Marion Co. Only)
	Deciduous Tree	Approximately 1,000
	Evergreen Tree	Approximately 150
	Ornamental Tree	Approximately 400

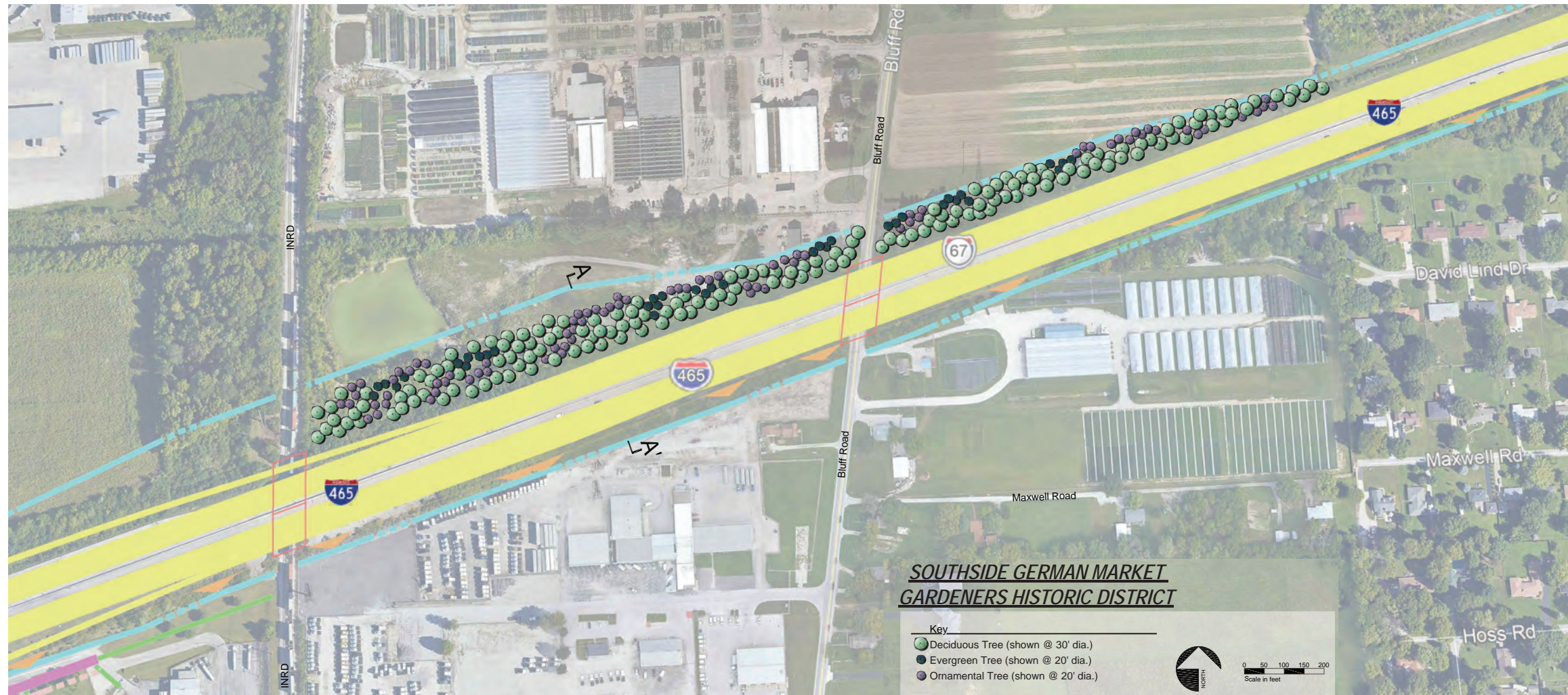
I-69 & I-465 Interchange

MARION COUNTY

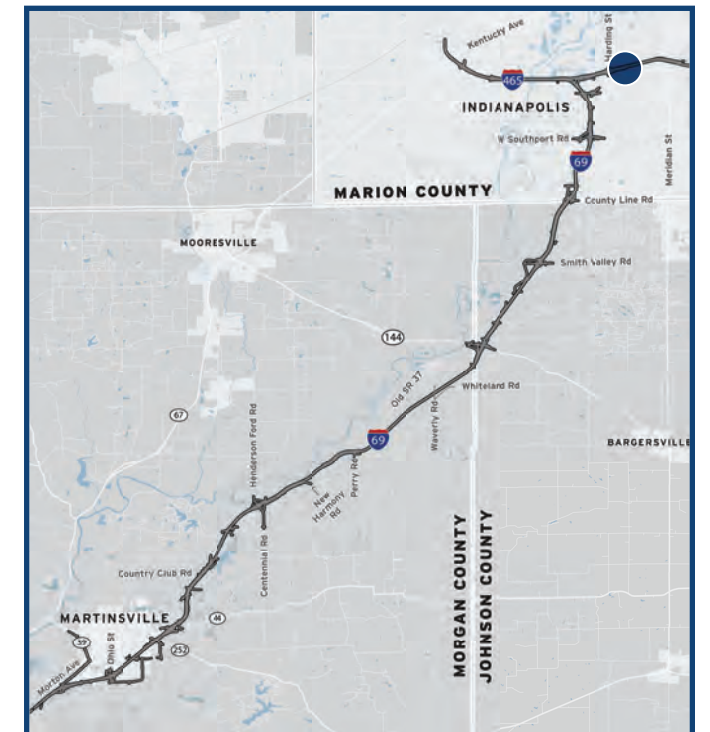
Corridor Aesthetics



Conceptual Corridor Landscaping

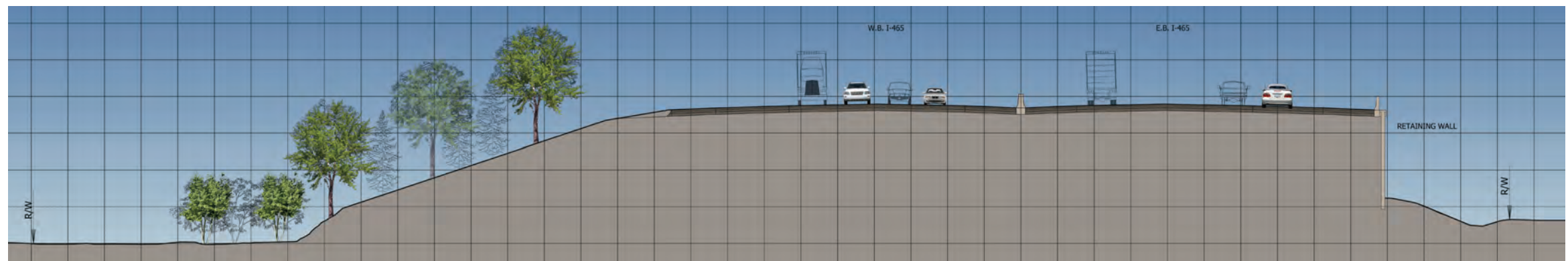


LOCATION PLAN



I-465 & Southside German Market Gardeners Historic District

I-465 Section A-A



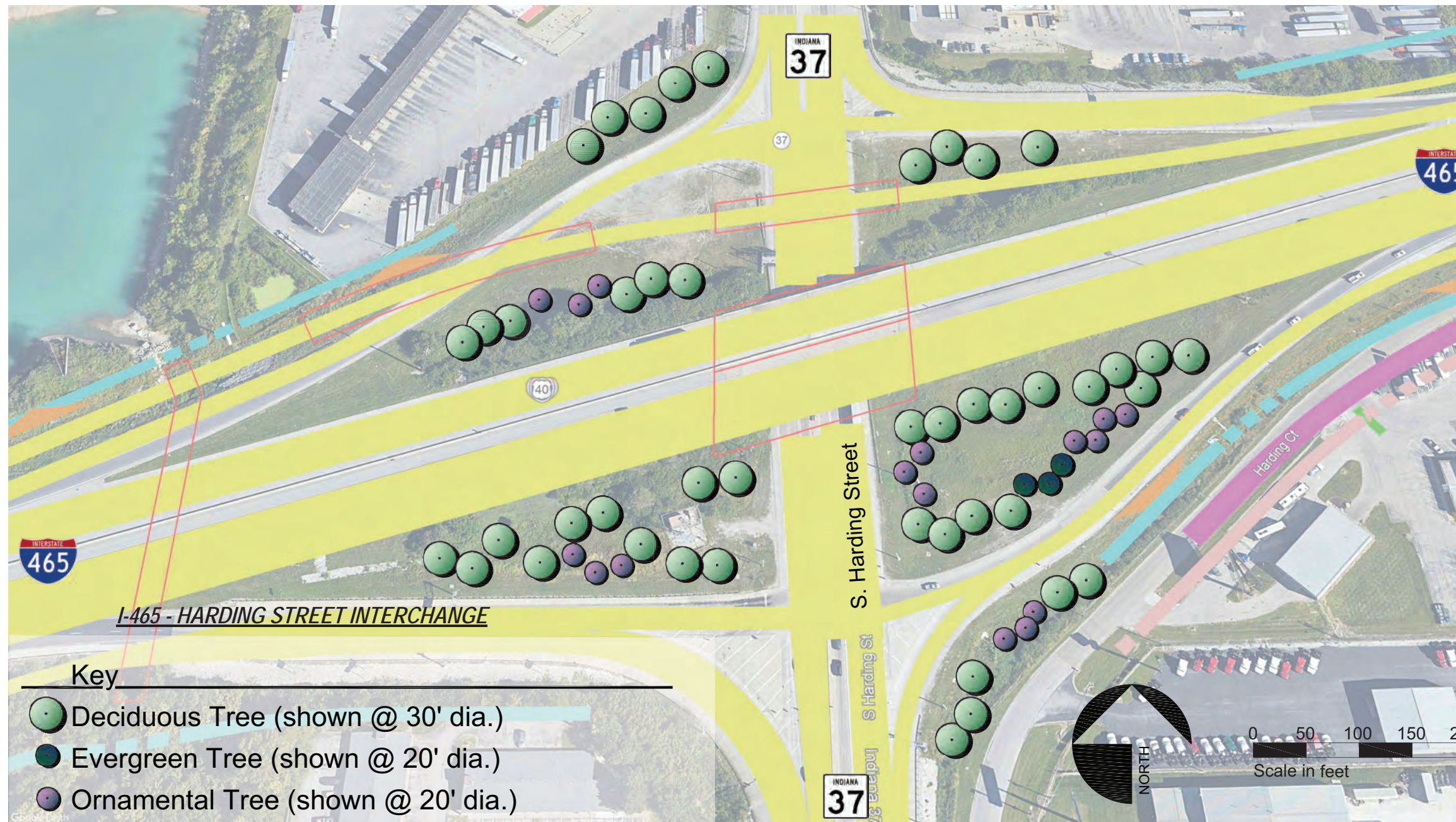
*This graphic is intended to show a conceptual landscaping plan. Final plans will be determined prior to planting. Page 8

MARION COUNTY

Corridor Aesthetics



Conceptual Corridor Landscaping



I-465 & Harding Street Interchange

LOCATION PLAN

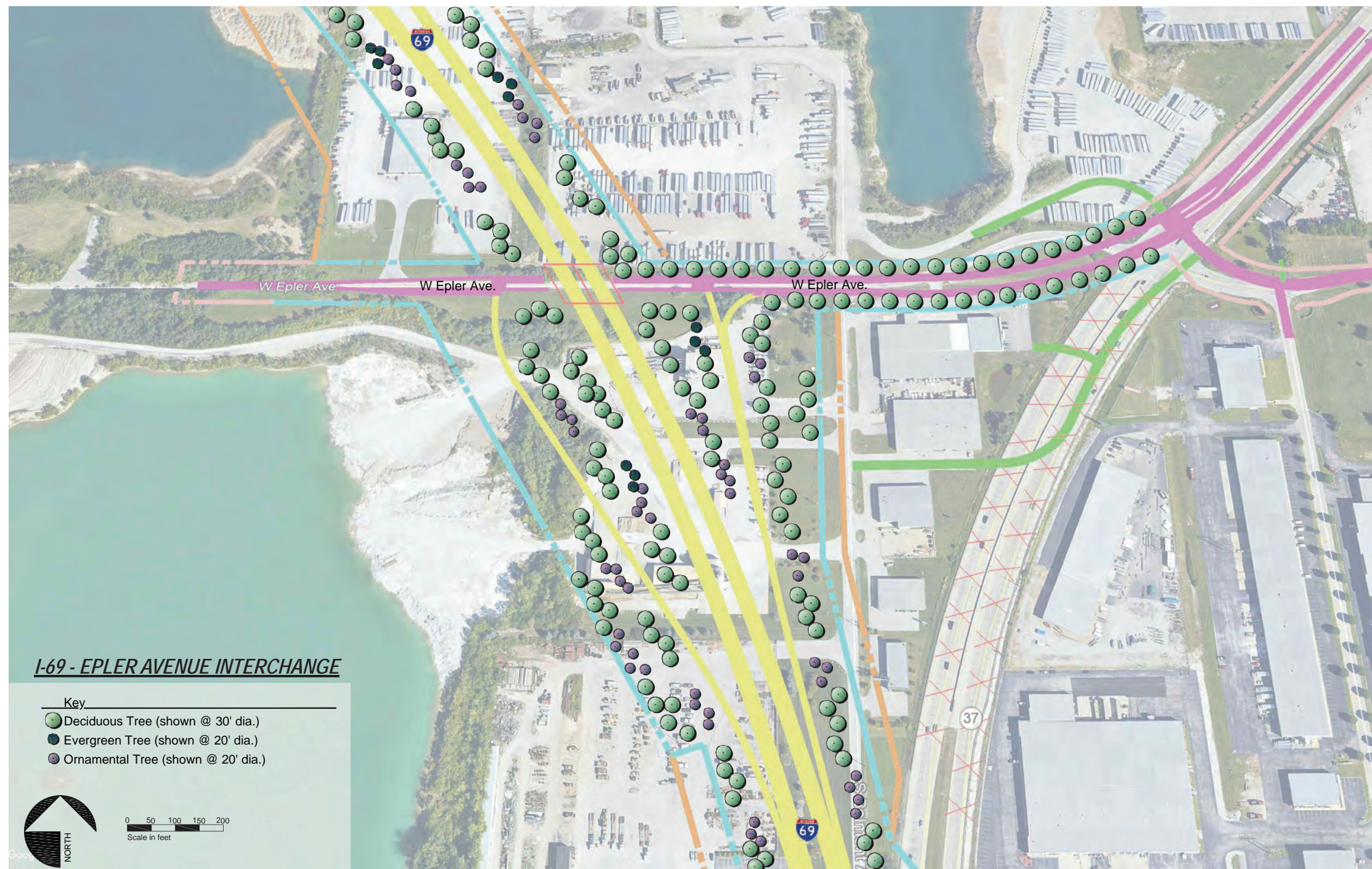


MARION COUNTY

Corridor Aesthetics

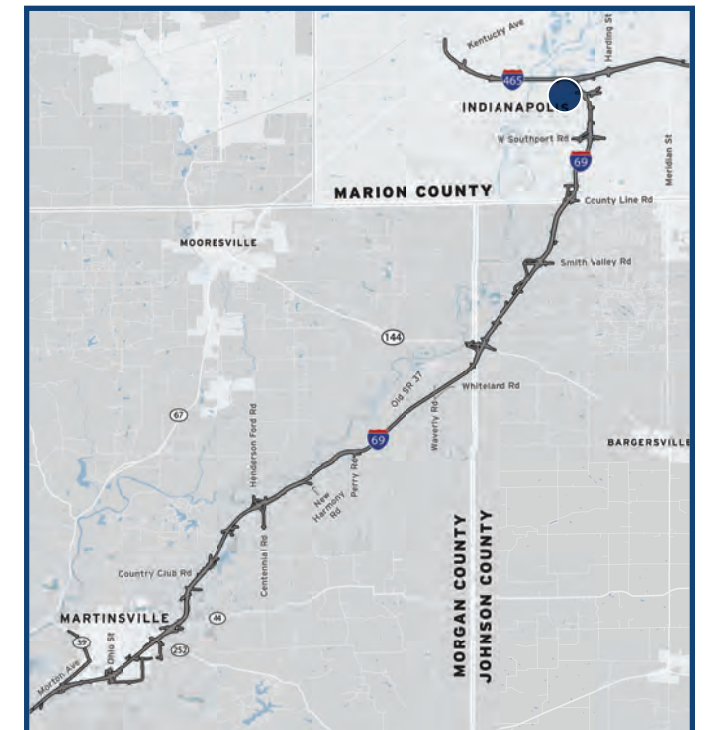


Conceptual Corridor Landscaping

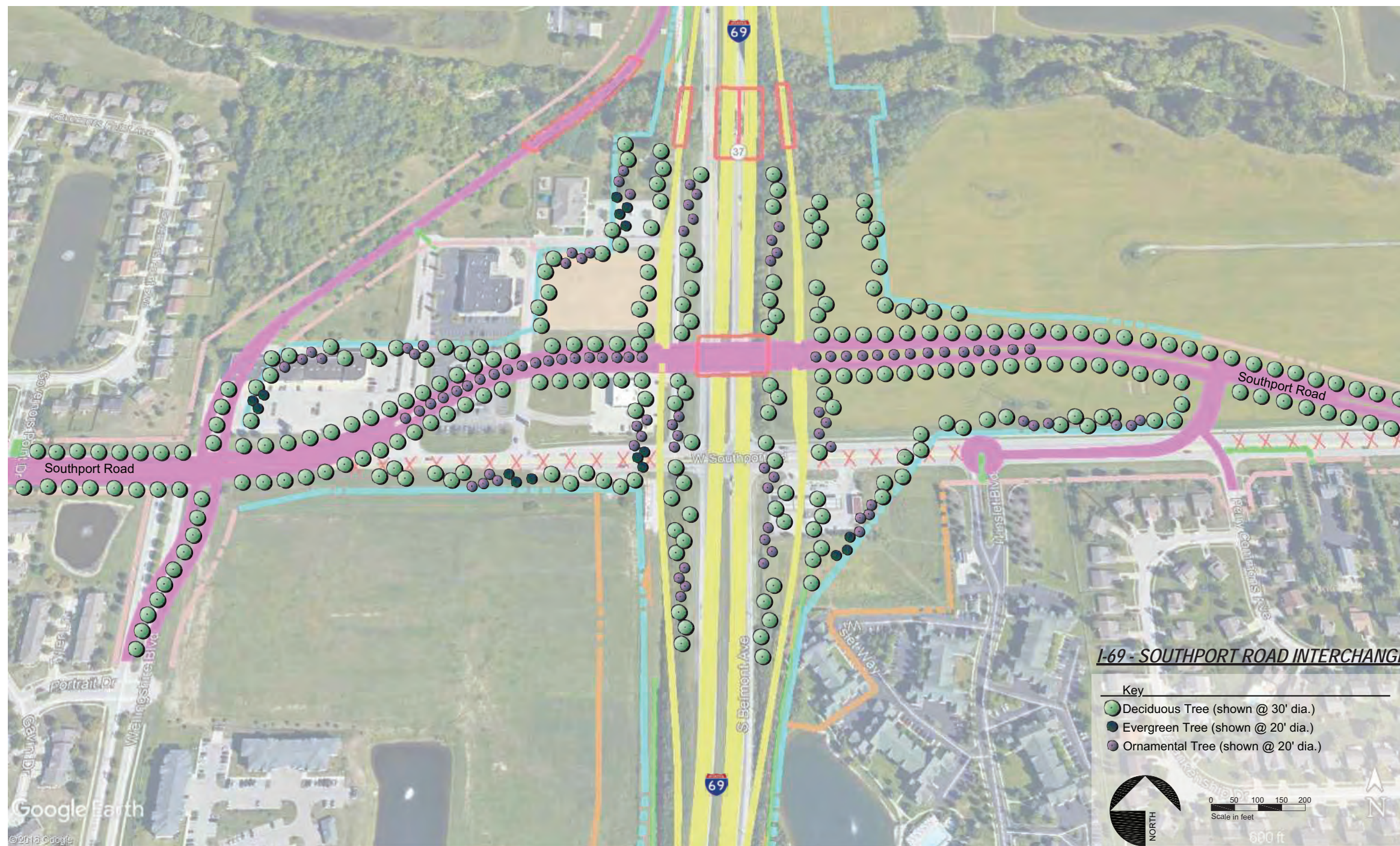


I-69 & Epler Avenue Interchange

LOCATION PLAN

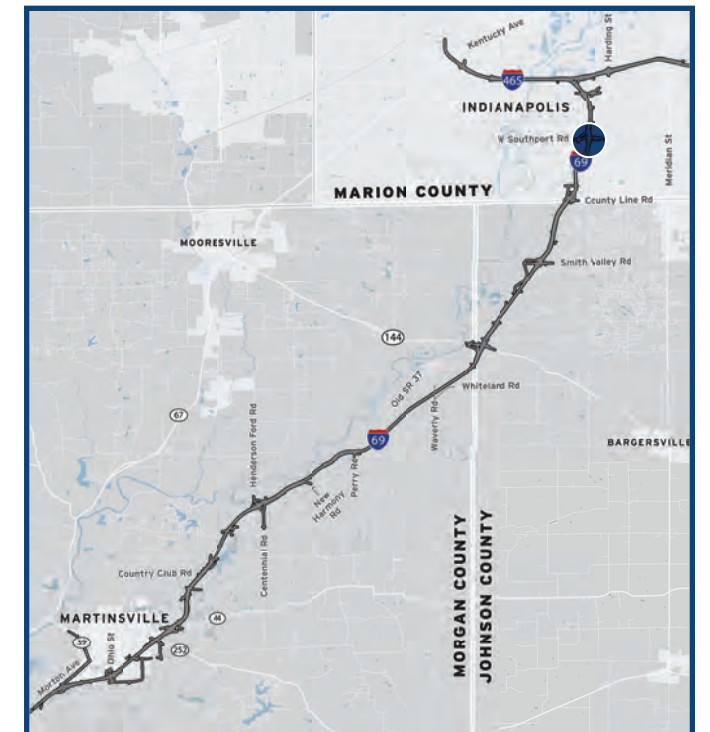


Conceptual Corridor Landscaping



I-69 & Southport Road Interchange

LOCATION PLAN



MARION COUNTY

Corridor Aesthetics



Conceptual Corridor Landscaping



I-69 & County Line Road Interchange

LOCATION PLAN

