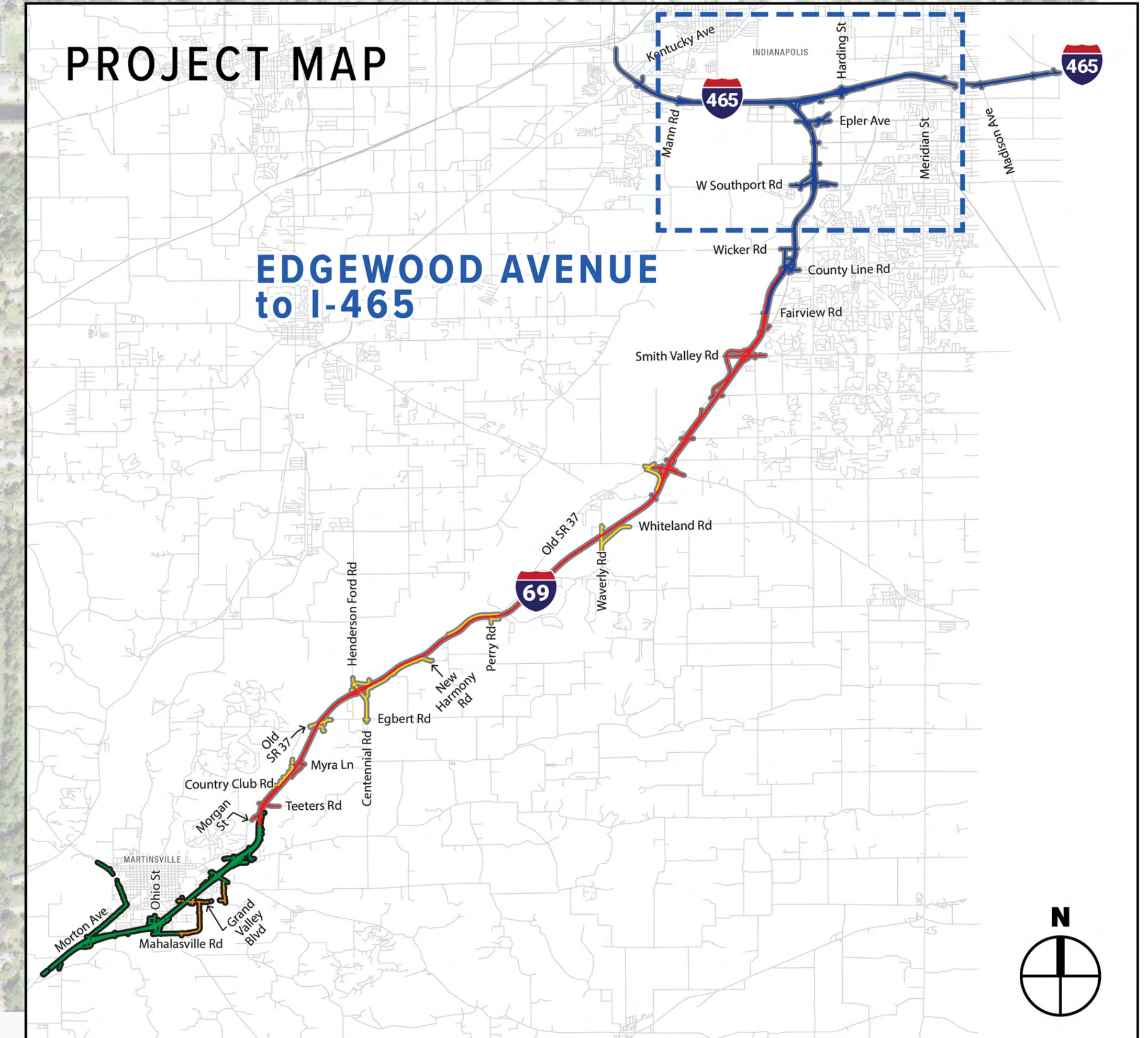
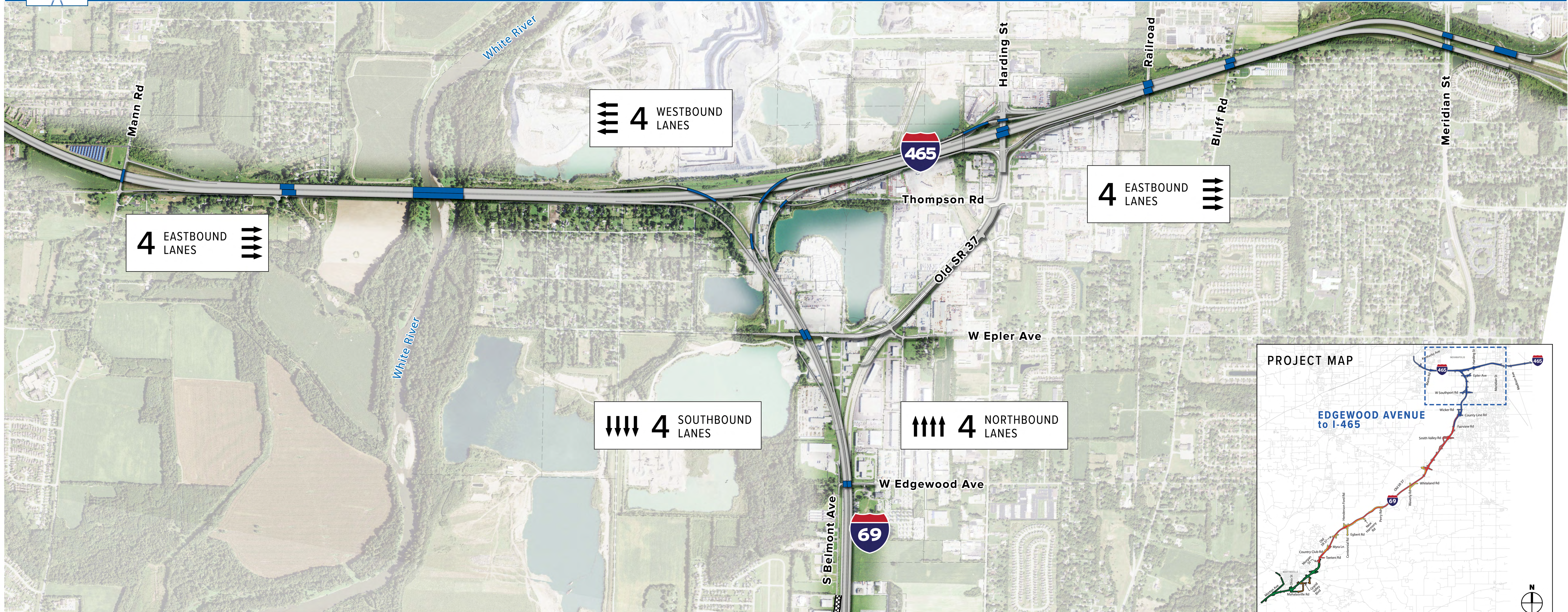


EDGEWOOD AVENUE to I-465



Contract 5 (Includes Mainline I-69, Access Roads and Overpasses from Fairview Rd. to I-465, and Mainline I-465 from I-70 to I-65)



LEGEND

- NEW PAVEMENT
- PARCEL LINE
- PROPOSED NOISE BARRIER

PROJECT MAP LEGEND

- CONSTRUCTION CONTRACT 1
- CONSTRUCTION CONTRACT 3
- CONSTRUCTION CONTRACT 5
- CONSTRUCTION CONTRACT 2
- CONSTRUCTION CONTRACT 4

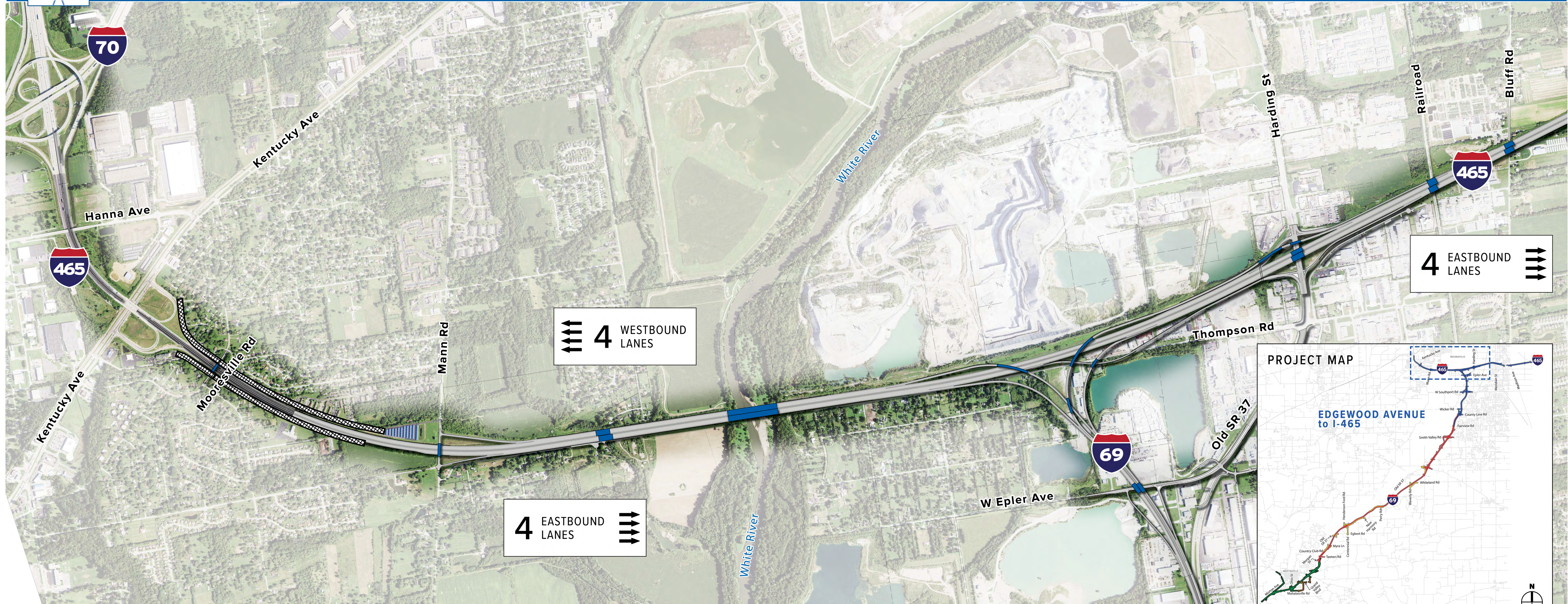


AS OF OCTOBER 2020
Final configurations are subject to change.

I-465 (I-70 to BLUFF RD.)



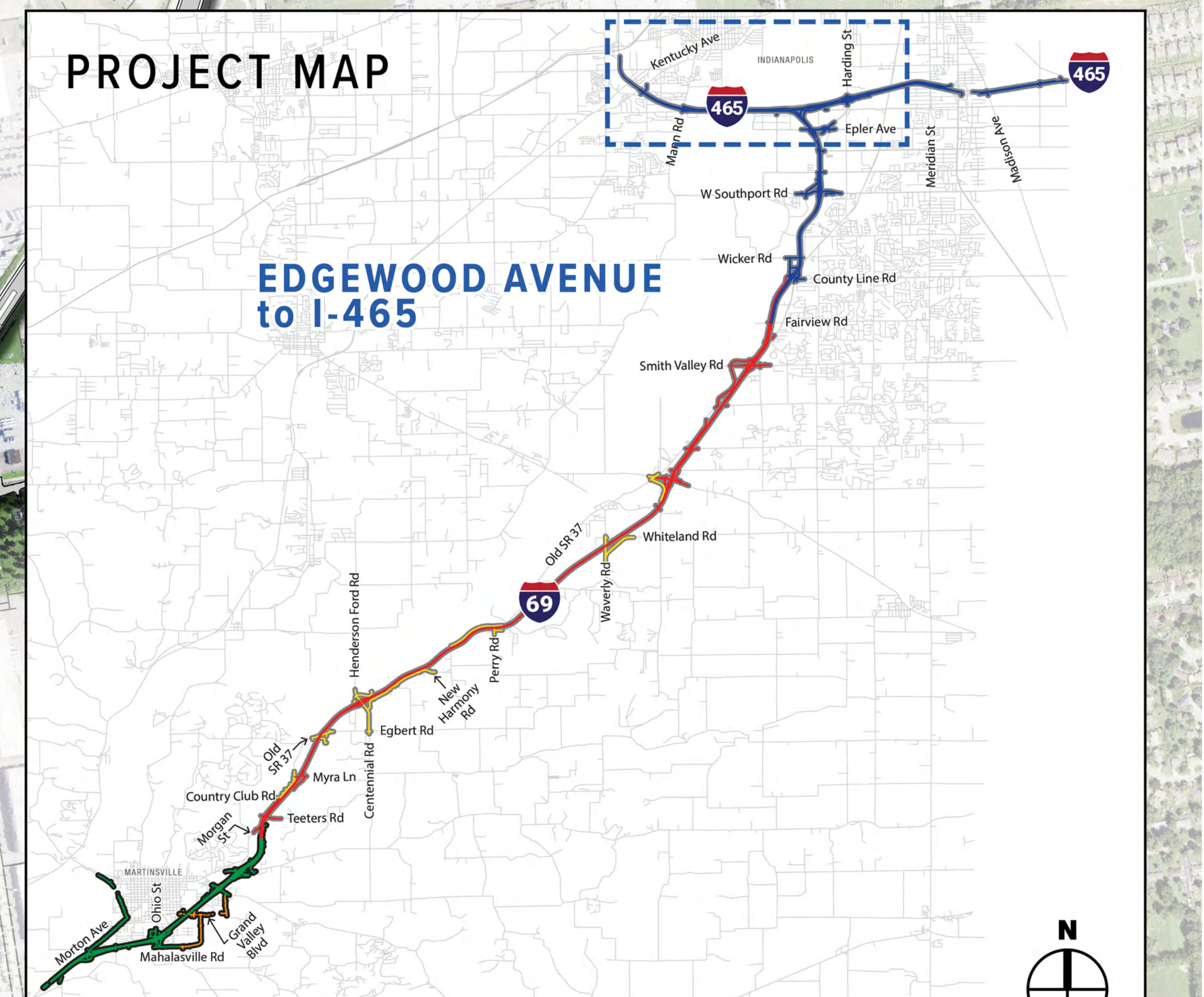
Contract 5 (Includes Mainline I-69, Access Roads and Overpasses from Fairview Rd to I-465, and Mainline I-465 from I-70 to I-65)



4 WESTBOUND LANES

4 EASTBOUND LANES

4 EASTBOUND LANES



PROJECT MAP LEGEND	
	CONSTRUCTION CONTRACT 1
	CONSTRUCTION CONTRACT 3
	CONSTRUCTION CONTRACT 5
	CONSTRUCTION CONTRACT 2
	CONSTRUCTION CONTRACT 4



LEGEND	
	NEW PAVEMENT
	PARCEL LINE
	PROPOSED NOISE BARRIER

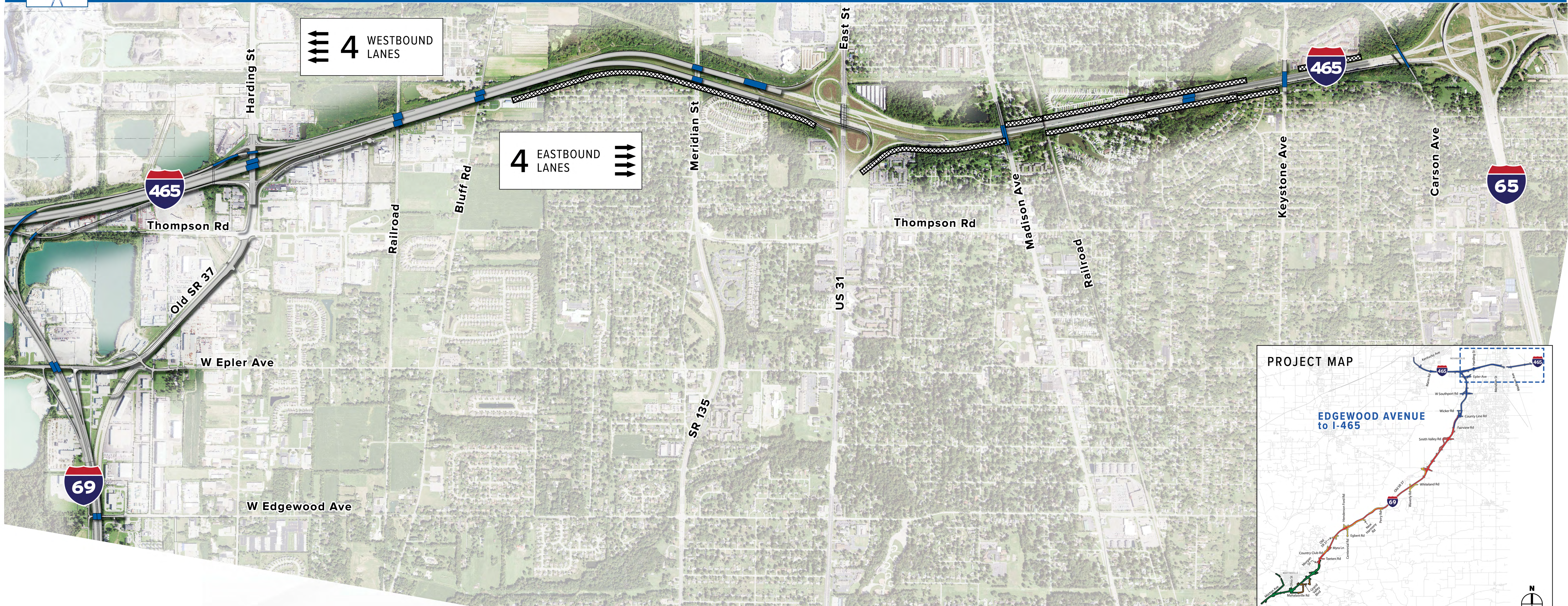


AS OF OCTOBER 2020
Final configurations are subject to change.

I-465 (I-69 to I-65)



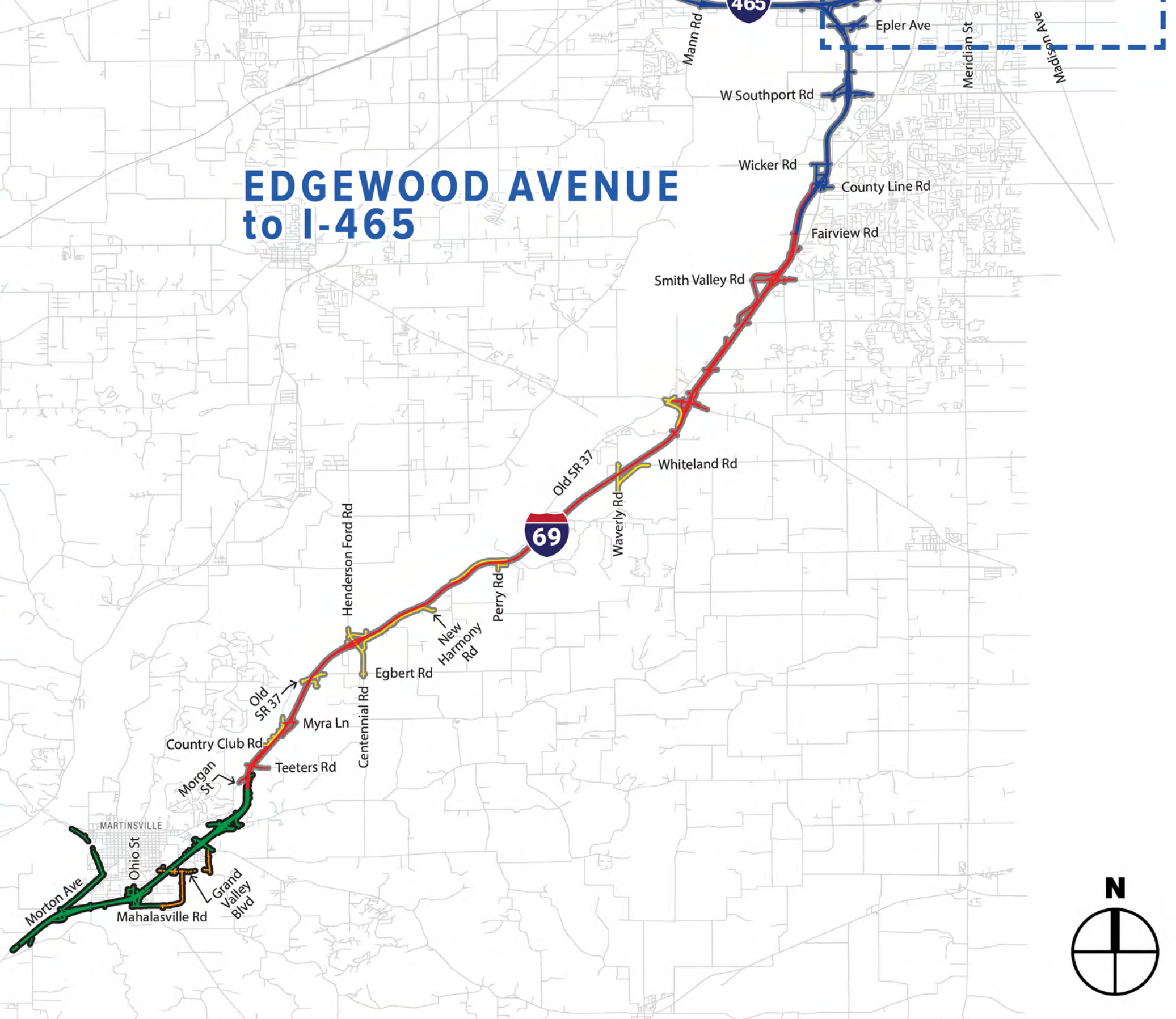
Contract 5 (Includes Mainline I-69, Access Roads and Overpasses from Fairview Rd. to I-465, and Mainline I-465 from I-70 to I-65)



4 WESTBOUND LANES

4 EASTBOUND LANES

PROJECT MAP



EDGEWOOD AVENUE to I-465



LEGEND

- NEW PAVEMENT
- PARCEL LINE
- PROPOSED NOISE BARRIER

PROJECT MAP LEGEND

 CONSTRUCTION CONTRACT 1	 CONSTRUCTION CONTRACT 2
 CONSTRUCTION CONTRACT 3	 CONSTRUCTION CONTRACT 4
 CONSTRUCTION CONTRACT 5	



AS OF OCTOBER 2020
Final configurations are subject to change.